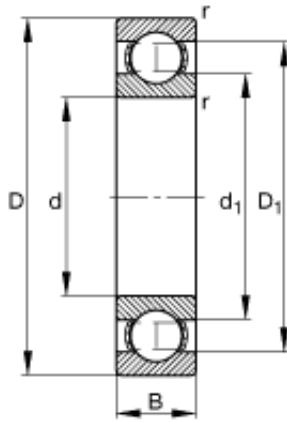




BEARING PRECISION AXLE CORP.



150 mm x 320 mm x 65 mm FAG 6330-M Deep groove ball bearings

Bearing No. 6330-M

Size	150x320x65 mm
Bore Diameter	150 mm
Outer Diameter	320 mm
Width	65 mm
d	150 mm
D	320 mm
B	65 mm
D_1	266,1 mm
$D_{a \max}$	303 mm
d_1	205,6 mm
$d_{a \min}$	167 mm
$r_{a \max}$	3 mm
r_{\min}	4 mm
m	26,5 kg / Weight
C_r	300000 N / Dynamic load rating (radial)
C_{0r}	290000 N / Static load rating (radial)
n_G	3600 1/min / Limiting speed
n_B	3000 1/min / Reference speed
C_{ur}	13100 N / Fatigue limit load, radial

6330-M Bearing 2D drawings and 3D CAD models