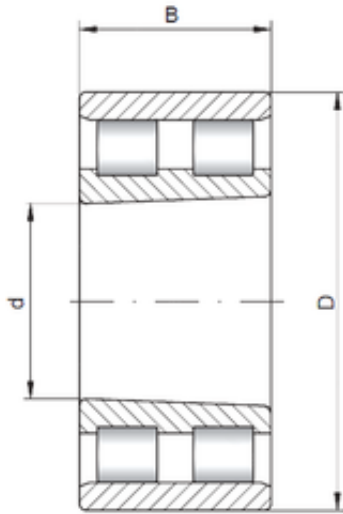




## BEARING PRECISION AXLE CORP.



600 mm x 870 mm x 200 mm ISO NN30/600 K  
Cylindrical roller bearings

Bearing No. NN30/600 K

Size	600x870x200 mm
Bore Diameter	600 mm
Outer Diameter	870 mm
Width	200 mm
d	600 mm
D	870 mm
B	200 mm
C	200 mm

NN30/600 K Bearing 2D drawings and 3D CAD models